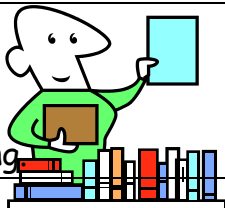


Reading Log

Keep up your daily reading log - write down how many pages you read each evening



Date	Title
Mon	
Tues	
Wed	
Thurs	

This week's learning will include:

Maths - Addition and Subtraction, Math-athon

Topic - Magnets and Electricity

PE - Gymnastics

Writing - Explanation

Math-athon

Keep learning your Math-athon facts.

From the teachers:

On Tuesday 30 June, we will be walking to Wairau Intermediate for the Science Roadshow. Please make sure that your child brings: shoes, any required medication, a warm top or raincoat, a drink bottle of water and a large lunch.

This term all children require a change of clothes for sport and playing on the field during lunchtime. Please send a change of clothing, all named in a plastic bag on Monday to school. Children will bring the bag of clothing home on Friday for washing.

Slippers are welcome in the classroom with the colder weather setting in.



Testing on Friday 2nd June.
Remember to bring back your Sponsor Forms.

SPELLING P.L.L

Personal Learning List

On Monday you will have 10 words to take home to learn. These are the words that you will be using in your **Smart Words** spelling programme for this week.

Reminder: Parent helpers for our trip to the Science Roadshow @ WIS Tuesday 30 May